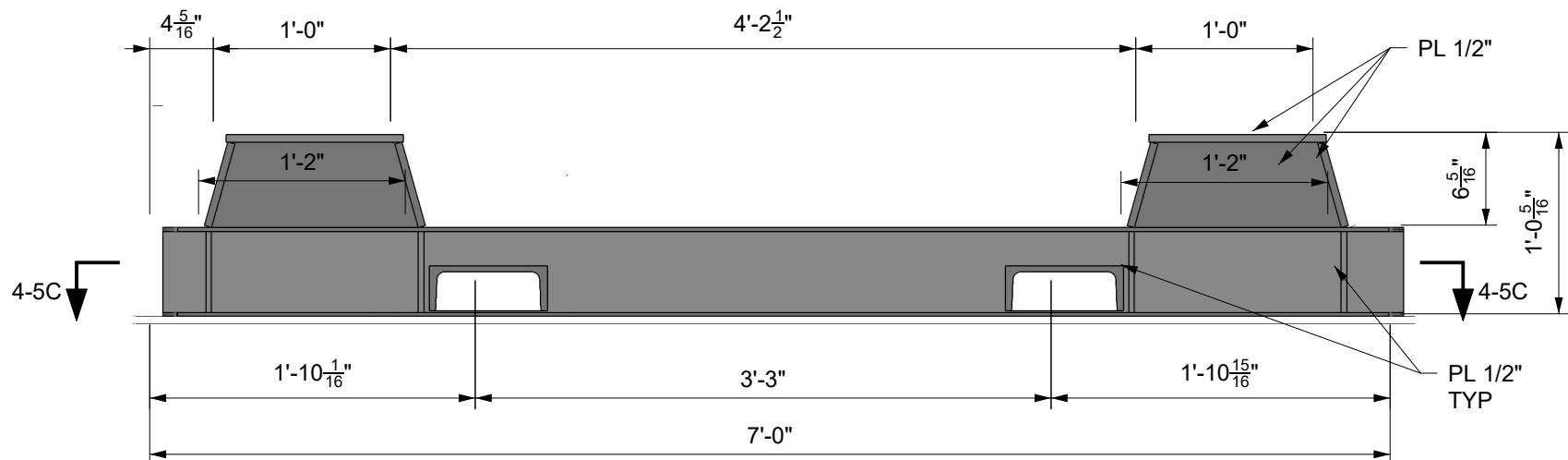


PLAN 4-5C
ENGINE FOUNDATION
SCALE: 1" = 1'-0"

GENERAL NOTES

1. ALL WORKMANSHIP AND WELDING TO BE IN ACCORDANCE WITH ASTM RULES AND SKAGIT COUNTY PROJECT SPECIFICATIONS. STRUCTURAL STEEL FABRICATION TOLERANCE TO BE WITHIN +/- 1/8".
2. SKID TO BE PRIMED AND PAINTED WITH MARINE GRADE COATINGS.
3. DRAWING IS PROVIDED AS A BASIS FOR BIDDING PURPOSES ONLY; UPON FINAL ENGINE SELECTION, CRUCIBLE WILL PROVIDE DRAWING FOR FABRICATION. SEE TECHNICAL SPECIFICATIONS.


PRELIMINARY FOR BIDDING PURPOSES ONLY



ELEVATION 4-5B
ENGINE FOUNDATION
SCALE: 1" = 1'-0"



SECTION 4-2B
ENGINE FOUNDATION
SCALE: 1" = 1'-0"

	Prepared for: SKAGIT COUNTY FERRY "GUEMES" REPOWER			
	Crucible Engineering LLC Seattle, WA crucibleservices.com (206) 383-1393			
PRELIMINARY	ENGINE FOUNDATION & THRUSTER CONNECTION			
	DRAWN: CSM	CHECKED: JSH	DATE: 9/19/2024	SHEET
	SCALE:	DRAWING NO: 24014-180-101		REV P1